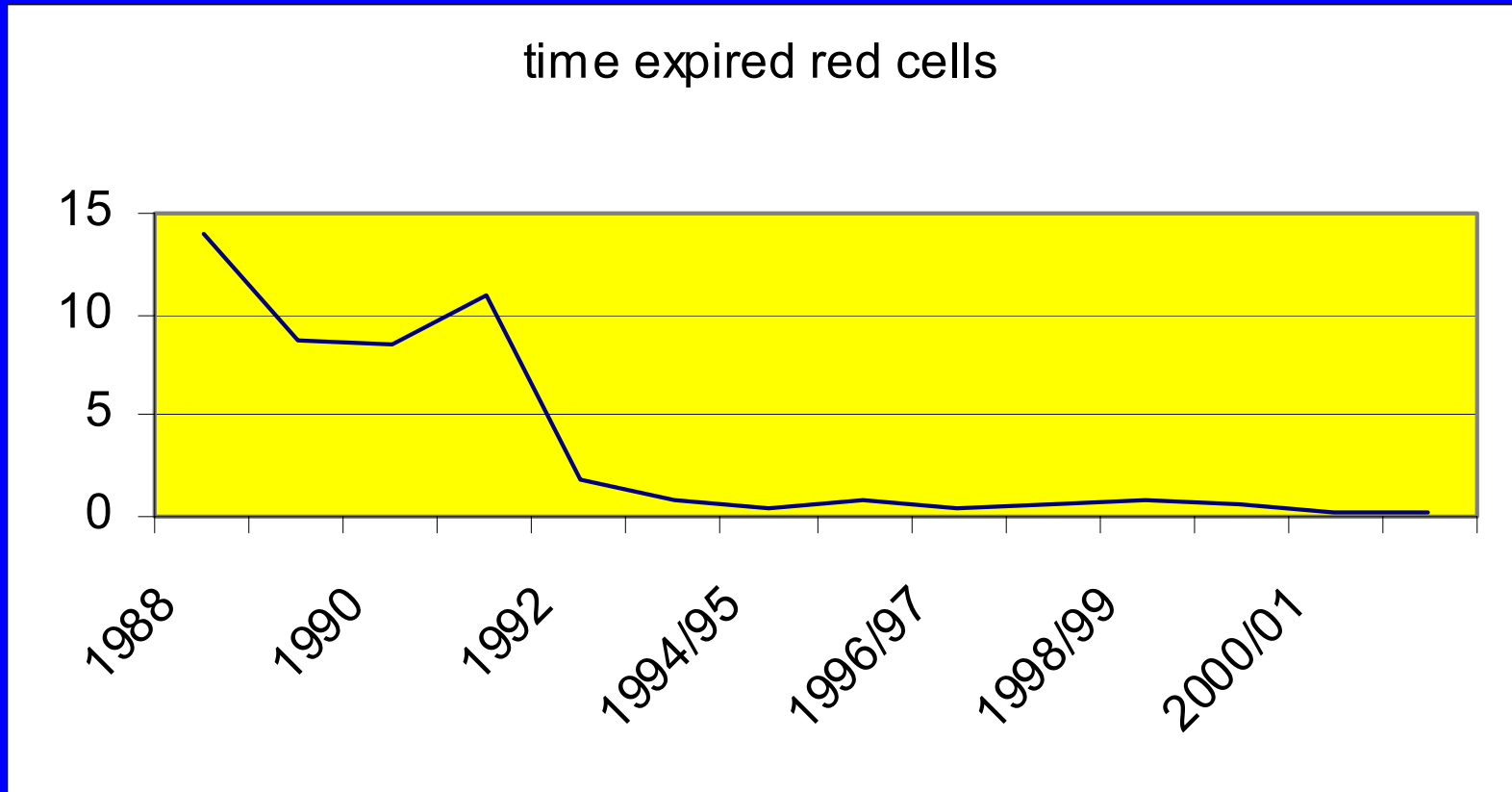


Red Cell Wastage

Steve Elcoate

Blood Transfusion Department
Royal Devon & Exeter Hospital

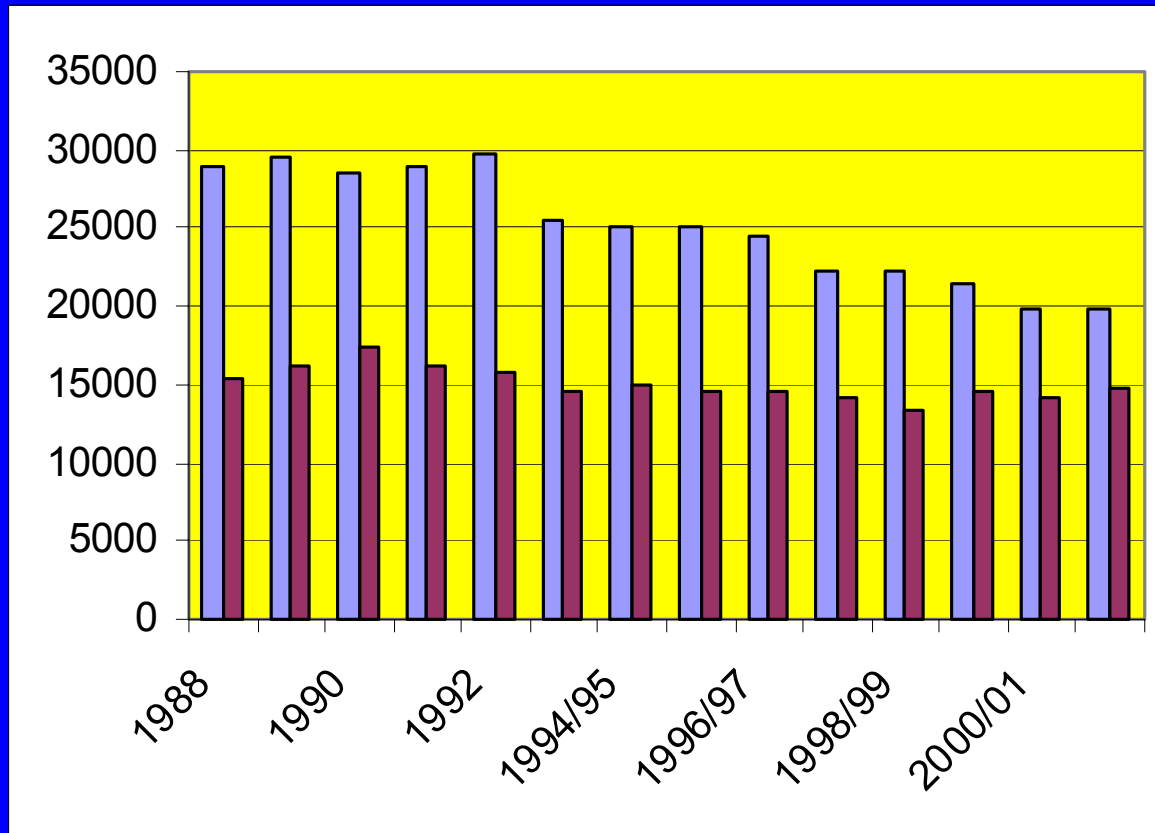
Things had to get better!



Reducing waste within the laboratory

- MBOS
- Selecting oldest red cells if use is certain
- Immediate spin crossmatch
- Next day return
- Lower stocks
- Credits for AB units that have time expired

Red cells matched and used

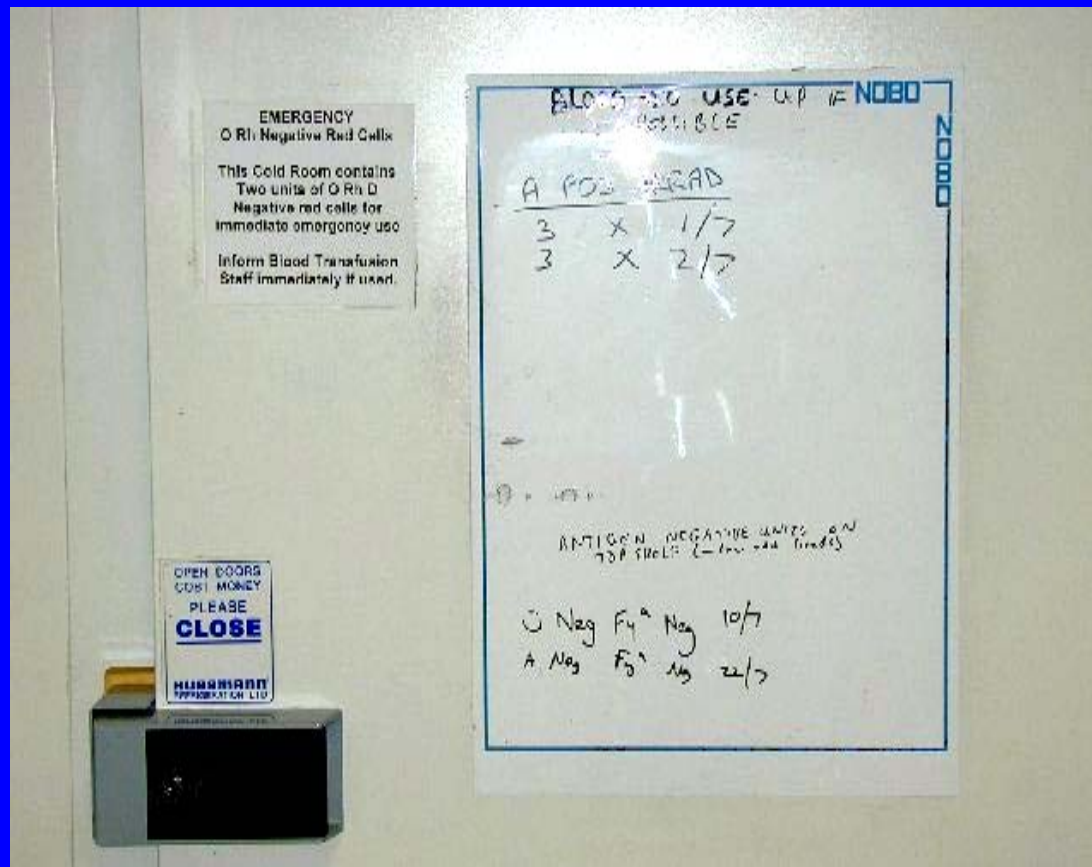


Staff awareness - how do they do it?

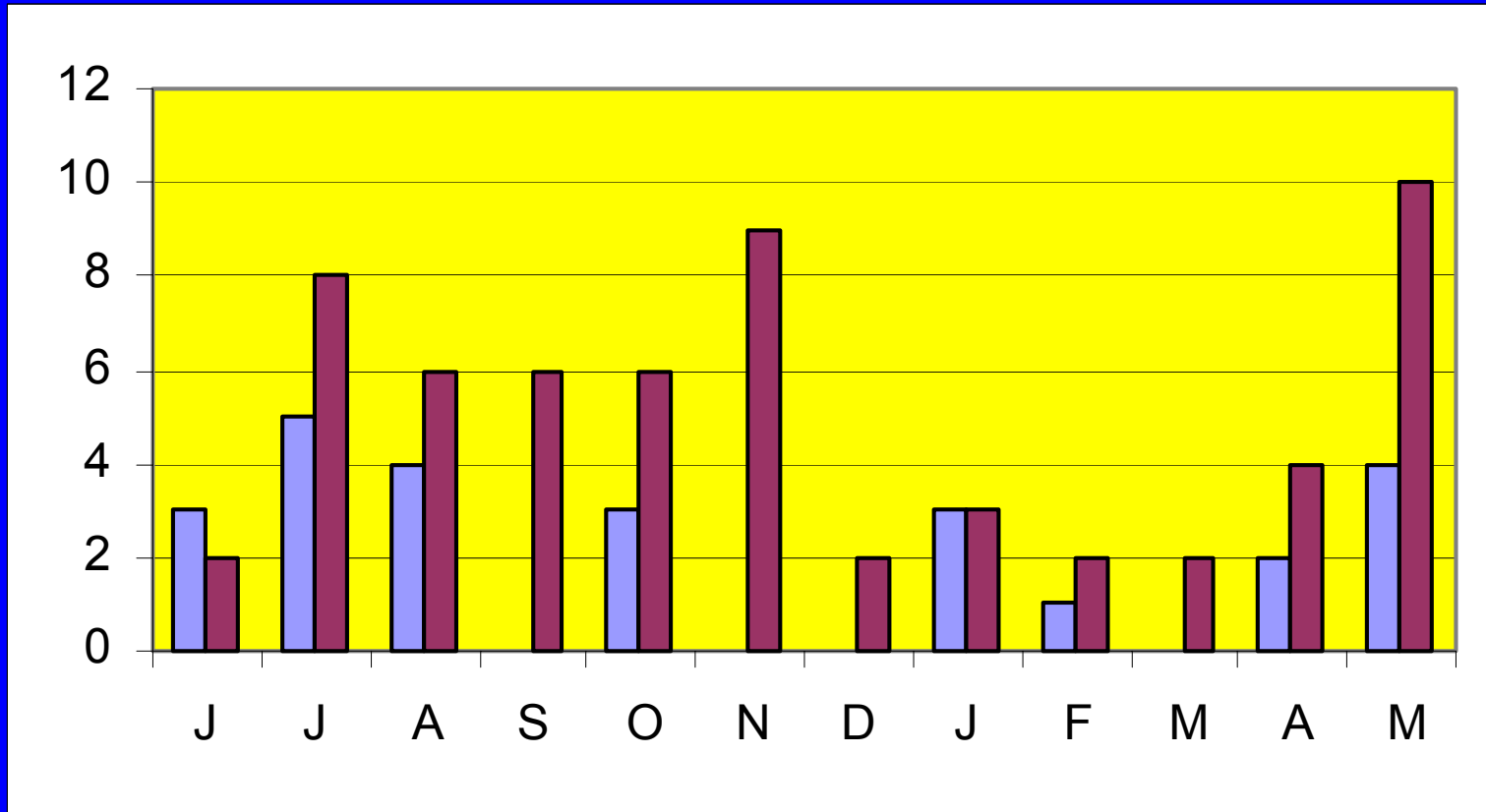
- Having “Transfusion Department” staff
- Being aware of the red cells approaching expiry
- Matching the request to the products available and the time required

The secret weapon

The secret weapon



The outside world - why did they do that!



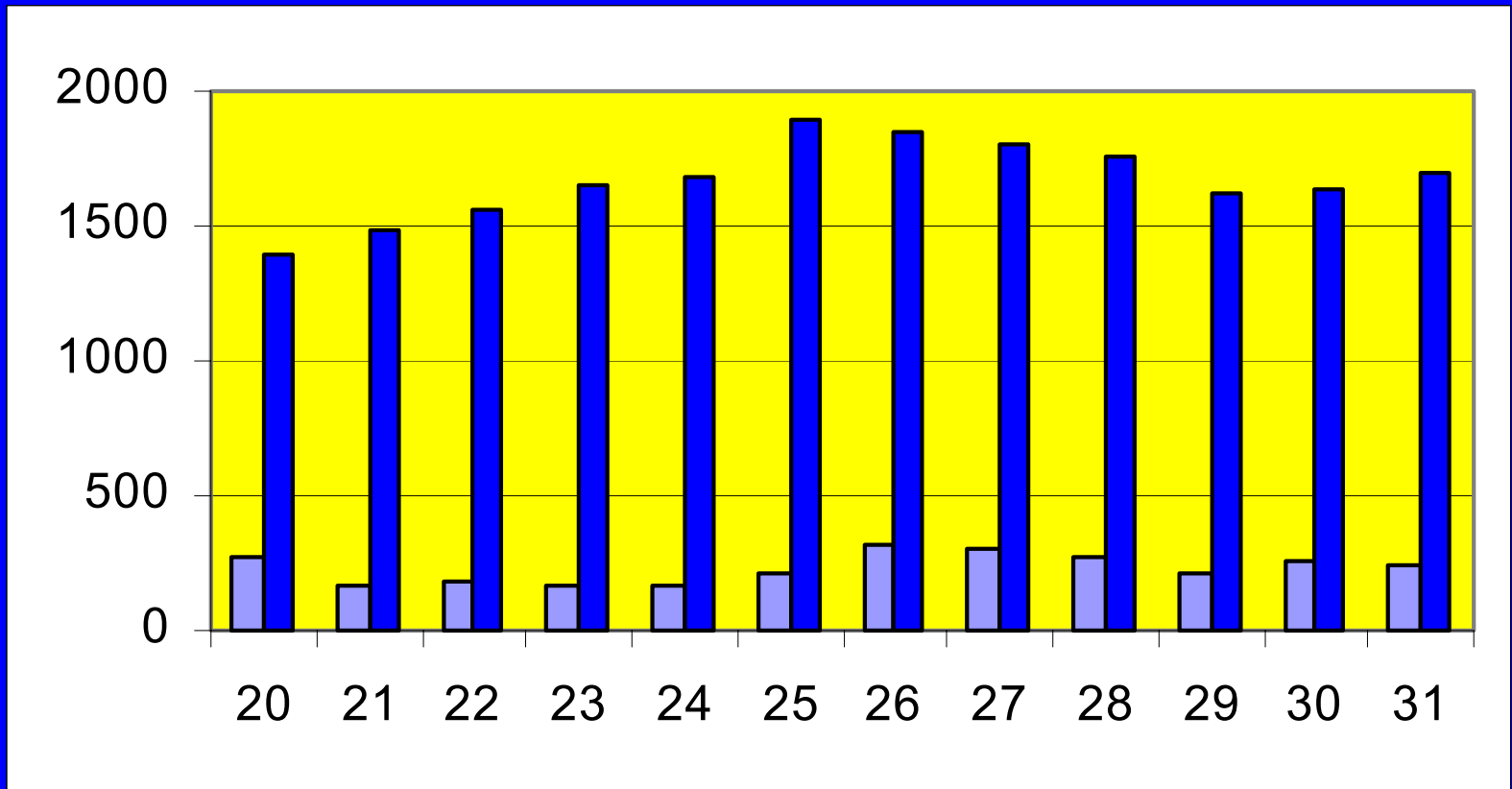
Hospital wastage

- Investigate every event where products are wasted
- Speak to staff involved and line manager
- Complete an incident report
- Report to Directorate Manager, Medical Director and Transfusion Committee
- Review/rewrite procedures

The NBS can make life difficult for us

- by successful donor recruiting campaigns
- by having no control over the number of donor attending sessions
- by issuing the oldest stock first within the terms of the contract

Bristol Centre Group O+ Stock end of May 2001 and 2002



Blood Stocks Management Scheme

- If you do join the scheme improve your wastage figures by “forgetting” to enter all the blood wasted

Summary

