

# **Blood Stocks Management Scheme Open Meeting Birmingham - 13 April 2005**

***Stakeholder Concerns - National Blood Service***

**Peter A Garwood  
Director of Service Delivery**

# ***BSMS - Open Meeting***

## ***Stakeholder Concerns - NBS***

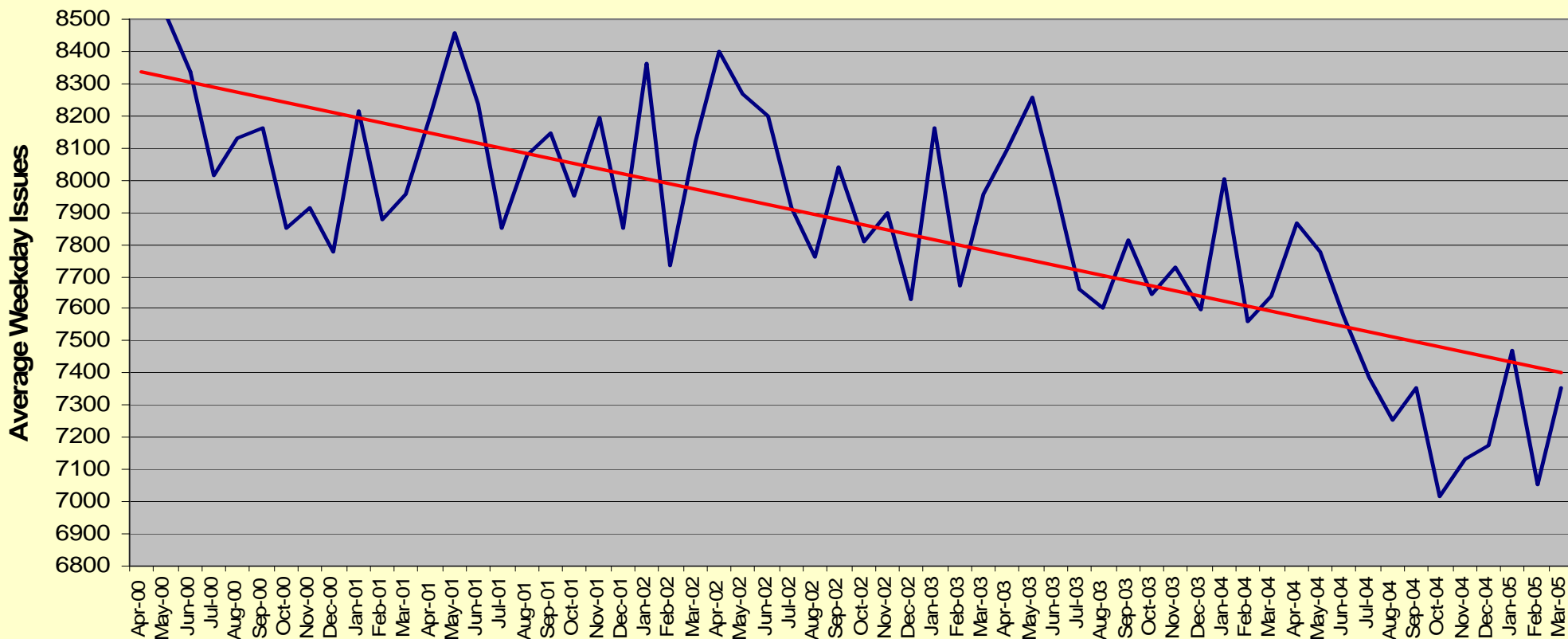
### **Agenda**

- Red cells
- Platelets
- Frozen components
- Transport

# BSMS - Open Meeting

## Stakeholder Concerns - NBS

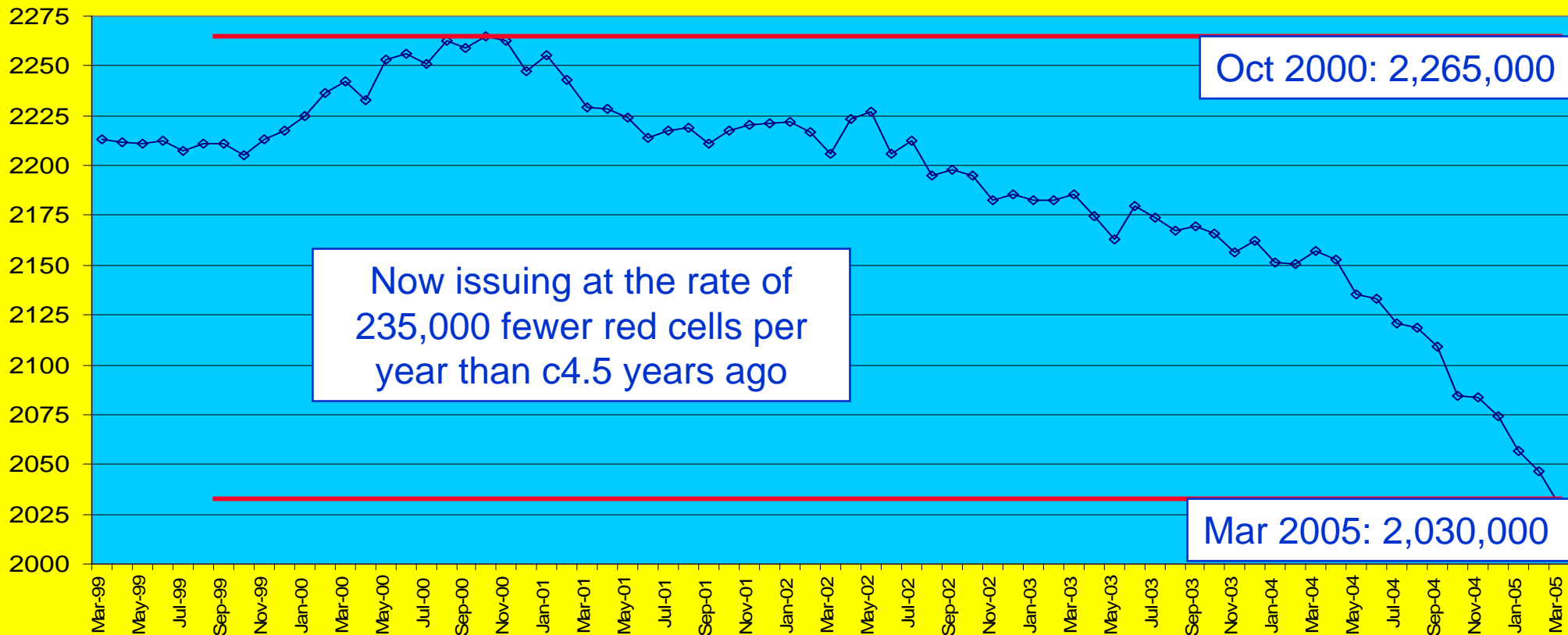
**Average Weekday Red Cell Issues By Month, with Linear Trendline**



# BSMS - Open Meeting

## Stakeholder Concerns - NBS

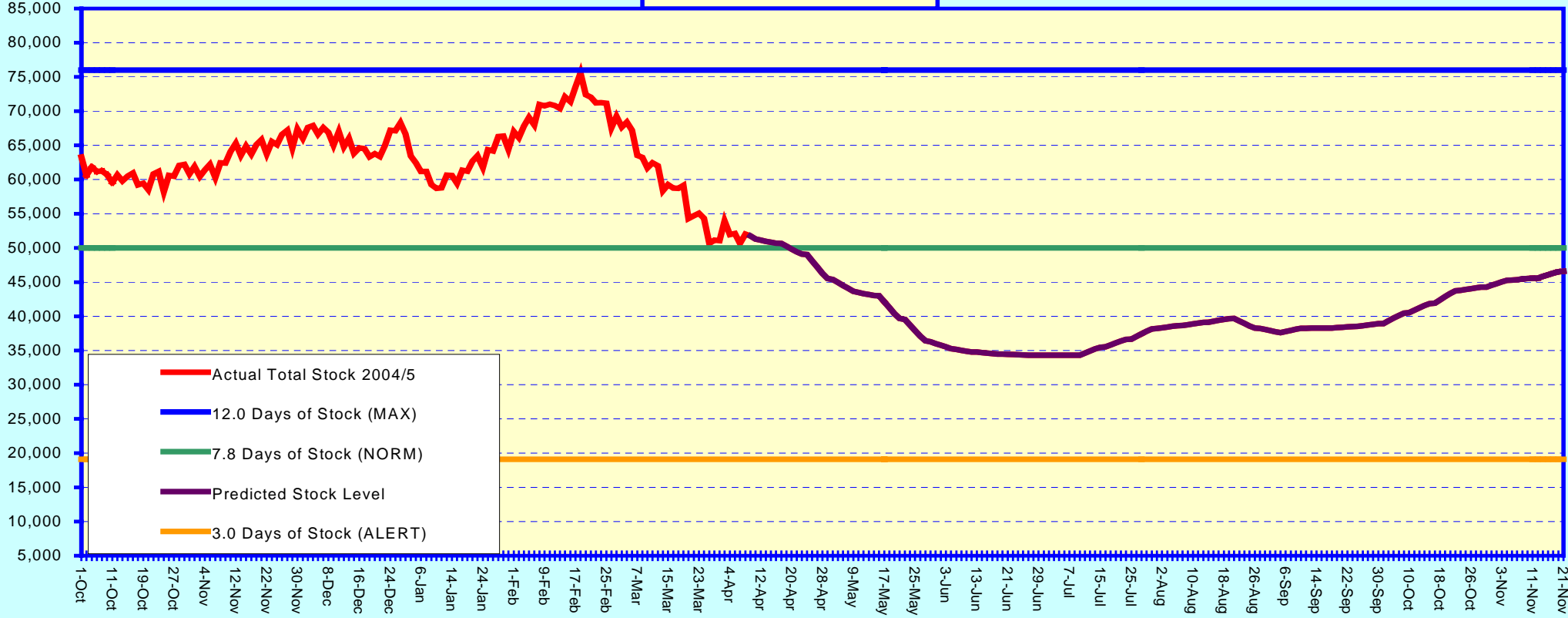
**Moving Annual Total of Red Cell [Full Unit Equiv] Issues to Hospitals - 000s**



# BSMS - Open Meeting

## Stakeholder Concerns - NBS

DAILY RED CELL STOCK -  
1st Oct 2004- 21 Nov 2005



# **BSMS - Open Meeting**

## **Stakeholder Concerns - NBS**

	<u>2005 / 06</u>	<u>2006 / 07</u>	<u>2007 / 08</u>		<u>2005 / 06</u>	<u>2006 / 07</u>	<u>2007 / 08</u>
<b>A</b>	-6.00%	-3.50%	-2.50%	<b>Red Cell Issues</b>	1,930,000	1,853,000	1,808,000
				<b>WB Collections</b>	2,053,000	1,971,000	1,923,000
<b>B</b>	-8.00%	-8.00%	-6.00%	<b>Red Cell Issues</b>	1,892,000	1,741,000	1,644,000
				<b>WB Collections</b>	2,013,000	1,852,000	1,749,000
<b>C</b>	-3.50%	-2.50%	-1.50%	<b>Red Cell Issues</b>	1,977,000	1,915,000	1,886,000
				<b>WB Collections</b>	2,103,000	2,037,000	2,006,000

### Notes

Scenario **A** is the Demand Planning Group's best estimate

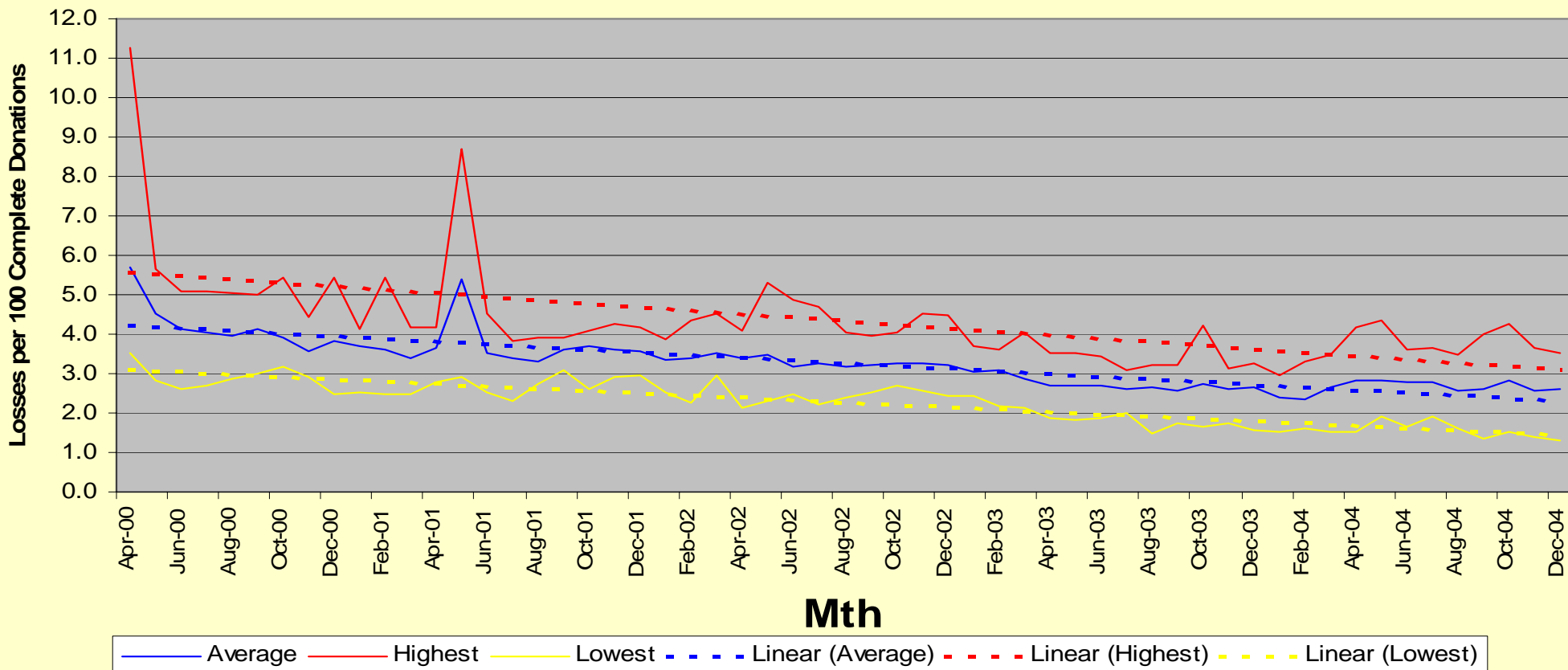
Scenario **B** is the Demand Planning Group's lowest issues estimate

Scenario **C** is the Demand Planning Group's highest issues estimate

# *BSMS - Open Meeting*

## *Stakeholder Concerns - NBS*

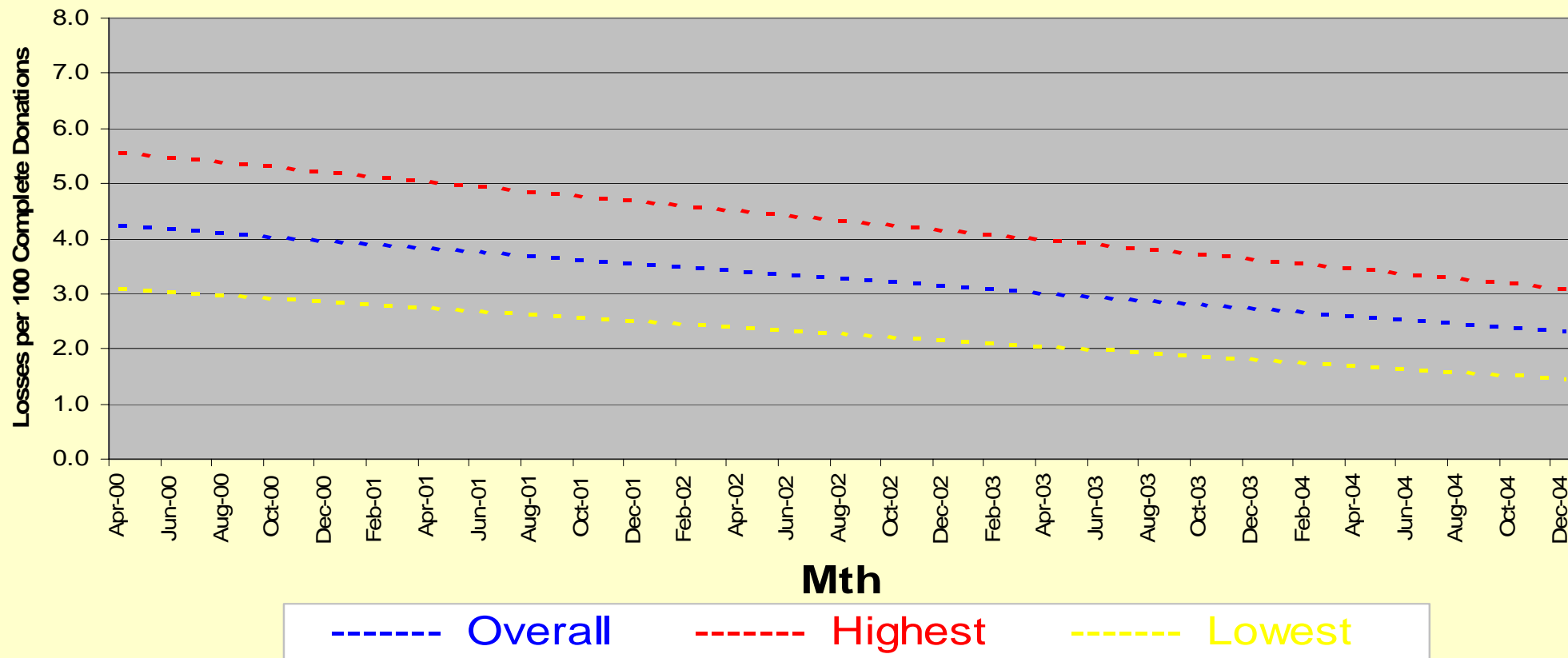
**Red Cell Processing Losses April 2000 to December 2004**



# BSMS - Open Meeting

## Stakeholder Concerns - NBS

Red Cell Processing Losses April 2000 to December 2004



# ***BSMS - Open Meeting***

## ***Stakeholder Concerns - NBS***

### **Red cells**

Short term:

- high stock levels / older age at issue / increased time-expiry within hospitals and within the NBS
- have taken action to reduce stock levels and improve group mix
- actively reviewing strategic target stock levels (cf. EP)

# ***BSMS - Open Meeting***

## ***Stakeholder Concerns - NBS***

### **Red cells**

Medium term:

- reducing collection capacity (fewer collection / processing / testing staff) (ref. Arm's Length Bodies Review)
- considering extending shelf-life of red cells from 35 to 42 days (as per USA / Canada / Australia etc.)

# *BSMS - Open Meeting*

## *Stakeholder Concerns - NBS*

### Red cells

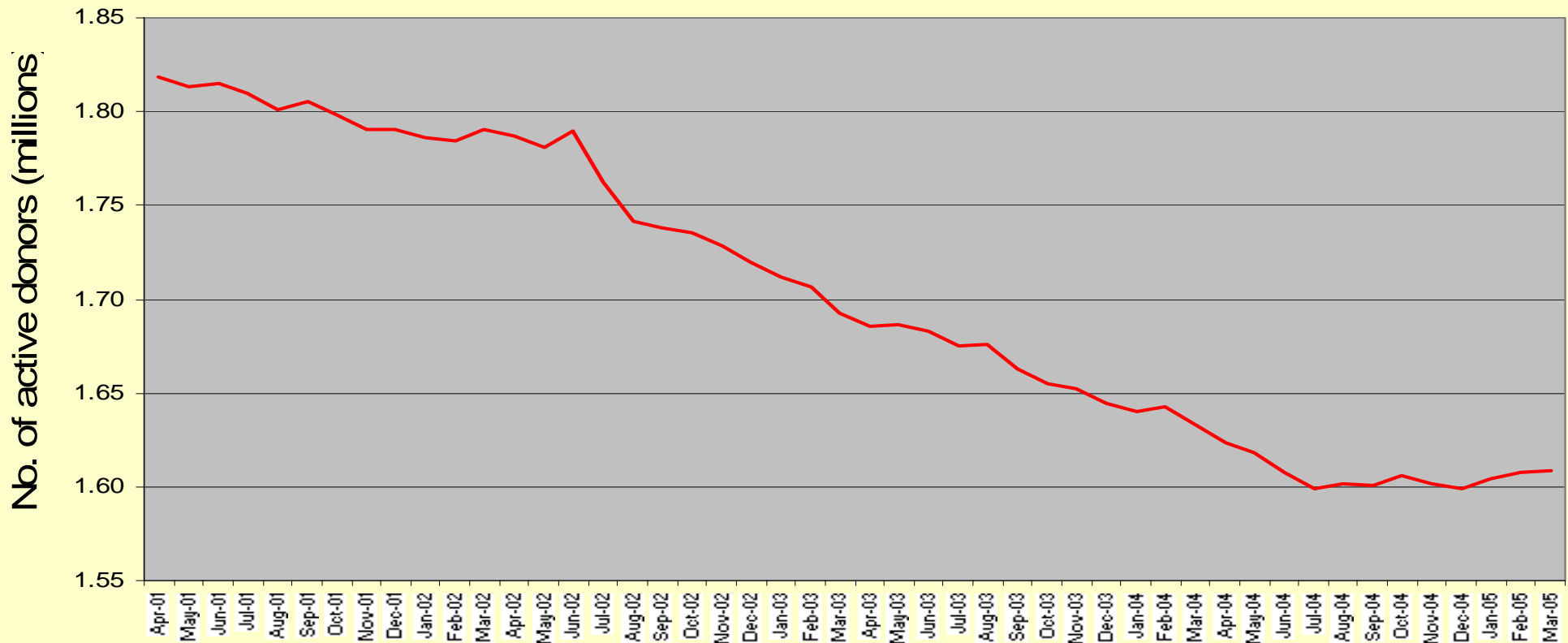
Longer term:

- looking at how we might further reduce cost of the supply chain
- but uncertainty surrounding longer term red cell demand
- better utilisation data is needed (cf. BSMS data exchange)
- and concerns about resilience of the donor base over time

# ***BSMS - Open Meeting***

## ***Stakeholder Concerns - NBS***

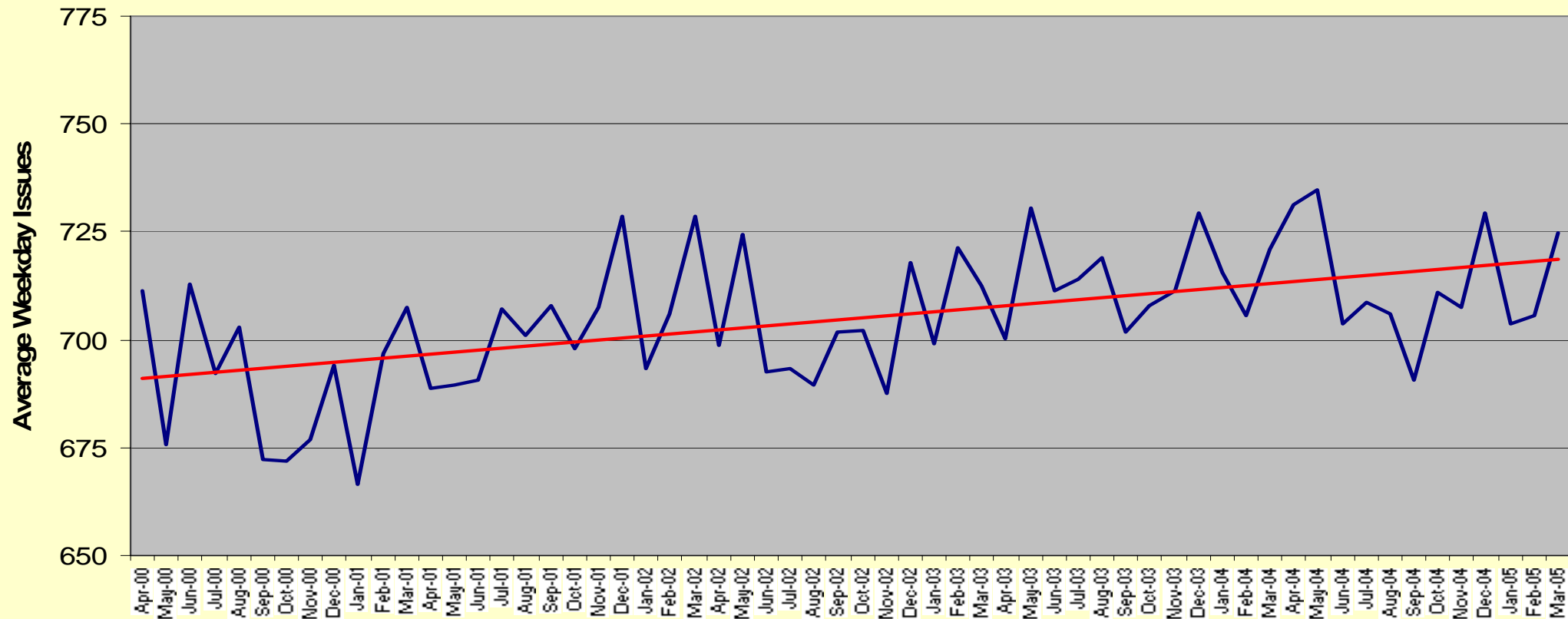
Size of Active Whole Blood Donorbase



# BSMS - Open Meeting

## Stakeholder Concerns - NBS

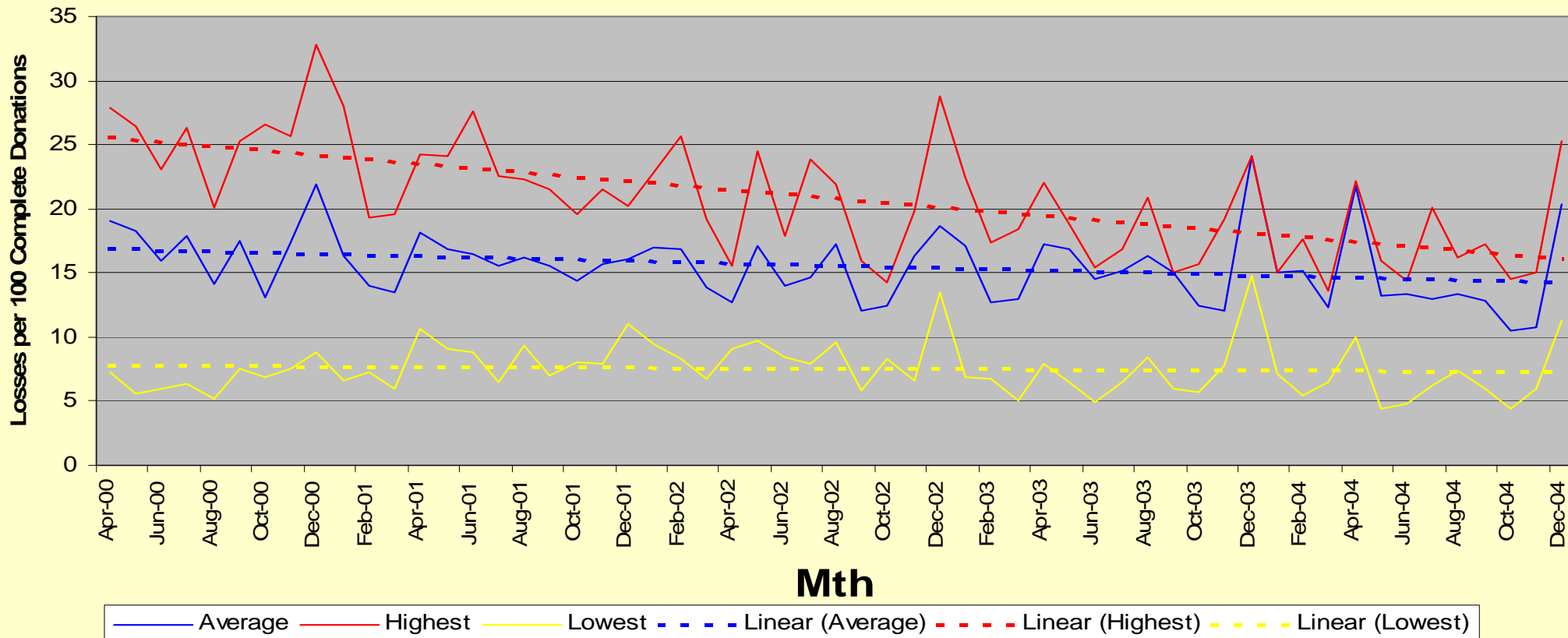
Average Weekday Platelet Issues By Month, with Linear Trendline



# *BSMS - Open Meeting*

## *Stakeholder Concerns - NBS*

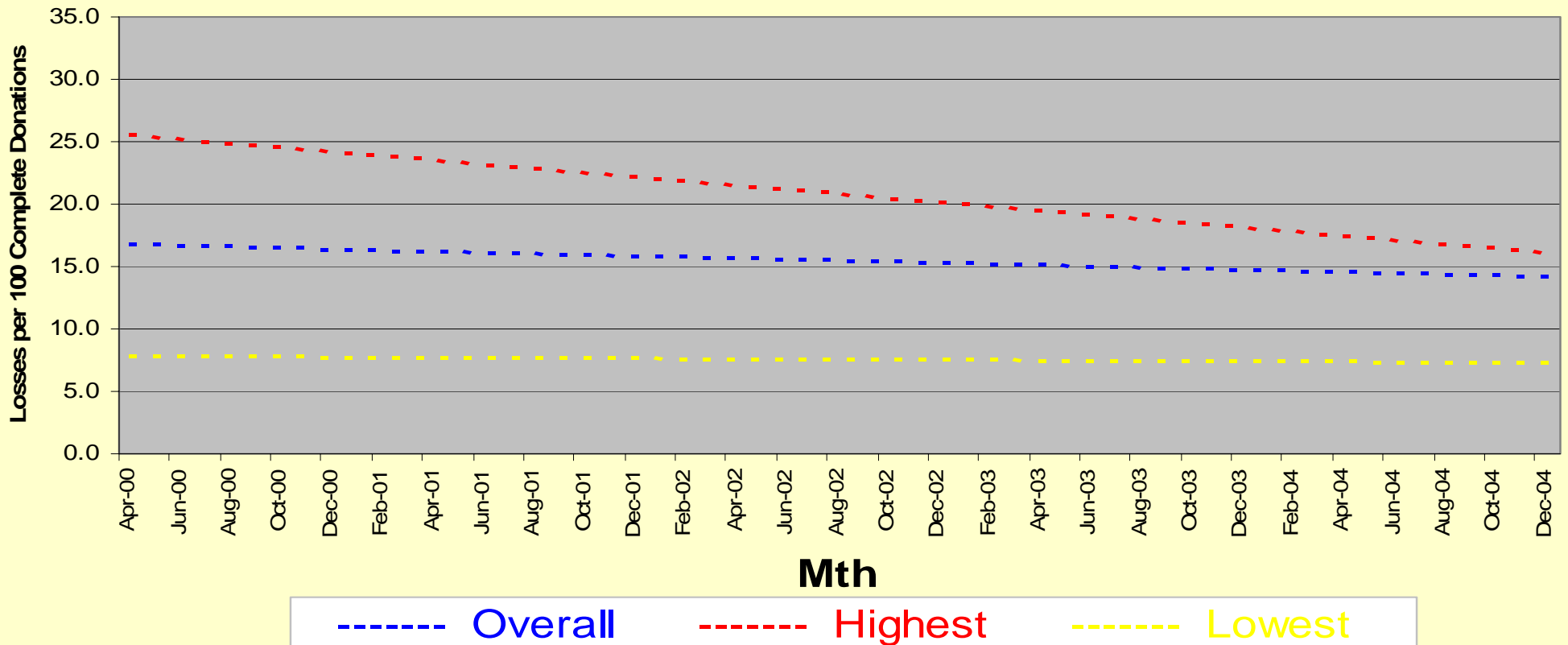
**Platelet Losses April 2000 to December 2004**



# BSMS - Open Meeting

## Stakeholder Concerns - NBS

Platelet Losses April 2000 to December 2004



# ***BSMS - Open Meeting***

## ***Stakeholder Concerns - NBS***

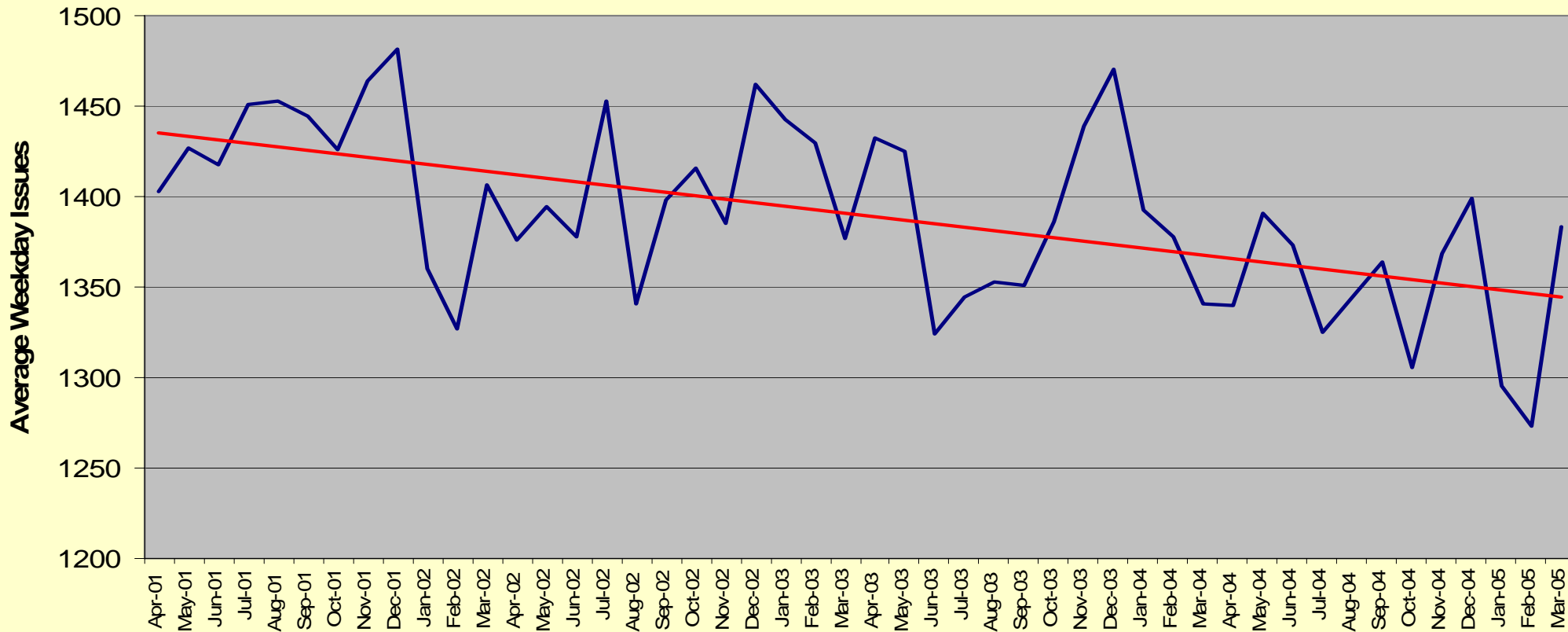
### **Platelets**

- increasing demand
- further reduction in wastage within NBS
- potential for reduced wastage within hospitals (supported by incorporation of platelet data into BSMS)
- increasing demand for platelets whilst whole blood collection rates are reducing may present difficulties
- increasing component donation (apheresis) to recovered ratios (quality / safety / cost)
- bacterial screening of platelets (cf. extended shelf-life)

# BSMS - Open Meeting

## Stakeholder Concerns - NBS

Average Weekday Frozen Component Issues By Month, with Linear Trendline



# ***BSMS - Open Meeting***

## ***Stakeholder Concerns - NBS***

### **Frozen components**

- reducing overall demand
- extension of US imported MBFFP for older children
- TRALI risk reduction (targeting male donors for FFP and recovered platelet production)

# ***BSMS - Open Meeting***

## ***Stakeholder Concerns - NBS***

### **Transport**

- excessive costs of *ad hoc* deliveries
- increasing number of NBS drivers and extending hours worked to reduce use of non-NBS drivers

# ***BSMS - Open Meeting***

## ***Stakeholder Concerns - NBS***

### **Conclusion**

- we need to continue to work together very closely
- to share more and better information
- so that we can more closely match supply to demand
- whilst maintaining and improving the safety and resilience of the blood supply