

# Blood tracking and stock management

Presenter Edwin Massey, consultant haematologist  
UBHT Bristol

# Hospital profile

- Blood Usage - High, Teaching Hospital  
Intensive Therapy/Care Unit  
Supply satellite hospital(s) - NHS or Private  
Haemato-oncology & Oncology unit  
Vascular surgery  
Cardio Thoracic Unit  
Casualty  
Obstetric Unit  
Delivery Time - Near

# UBHT beds by Hospital

•BRI	467
•BCH	132
•StM	270
•BGH	164
•BEH	46
•BOC	85
•BDH	1
•Keynsham	64
Total	1229

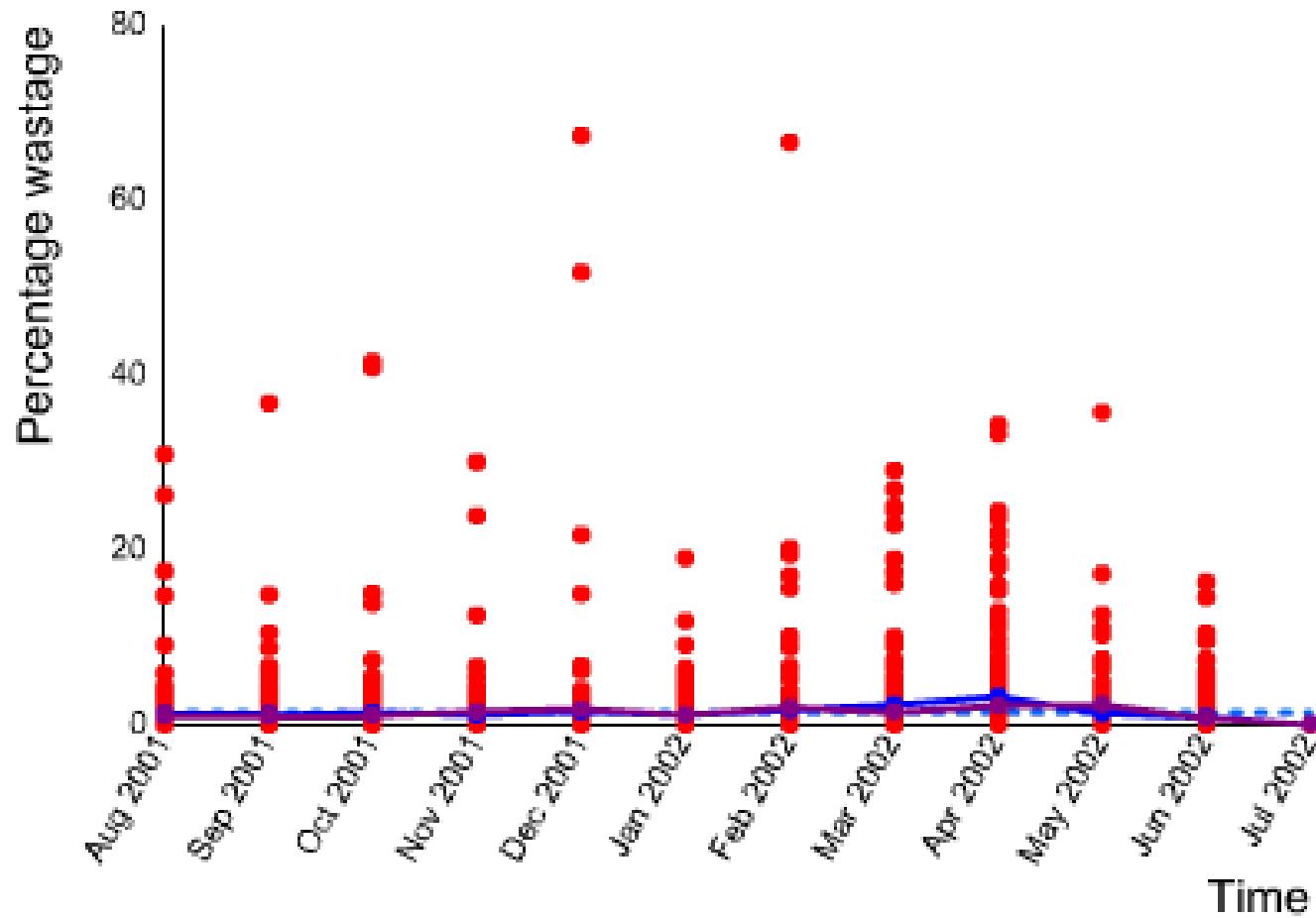
# Annual Blood Transfusion workload

Requests	Units issued	Units used	Unused requests
10,800	27,000	18,500 (68%)	3,000 (28%)

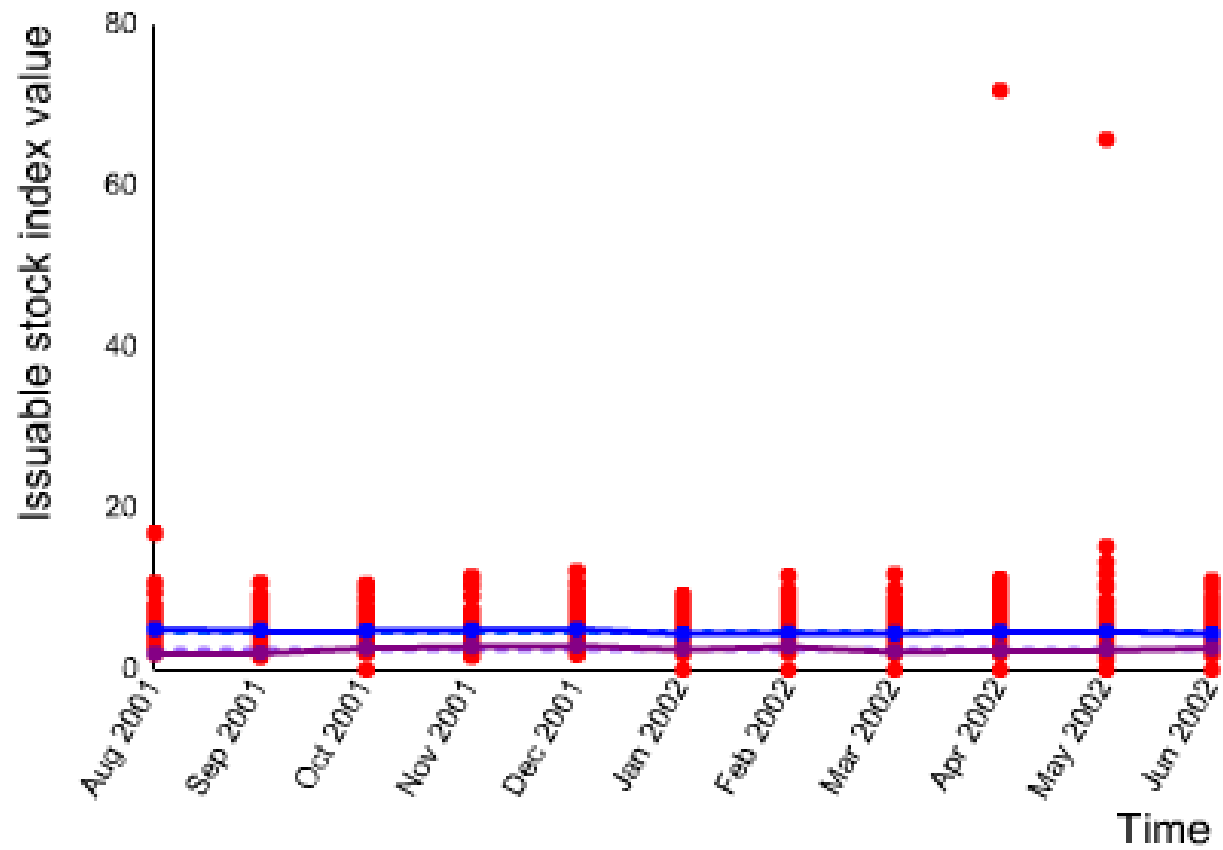
Ideal stock:

O +	O -	A +	A -	B +	B -	AB +	AB -
40	8	40	8	8	2	4	2

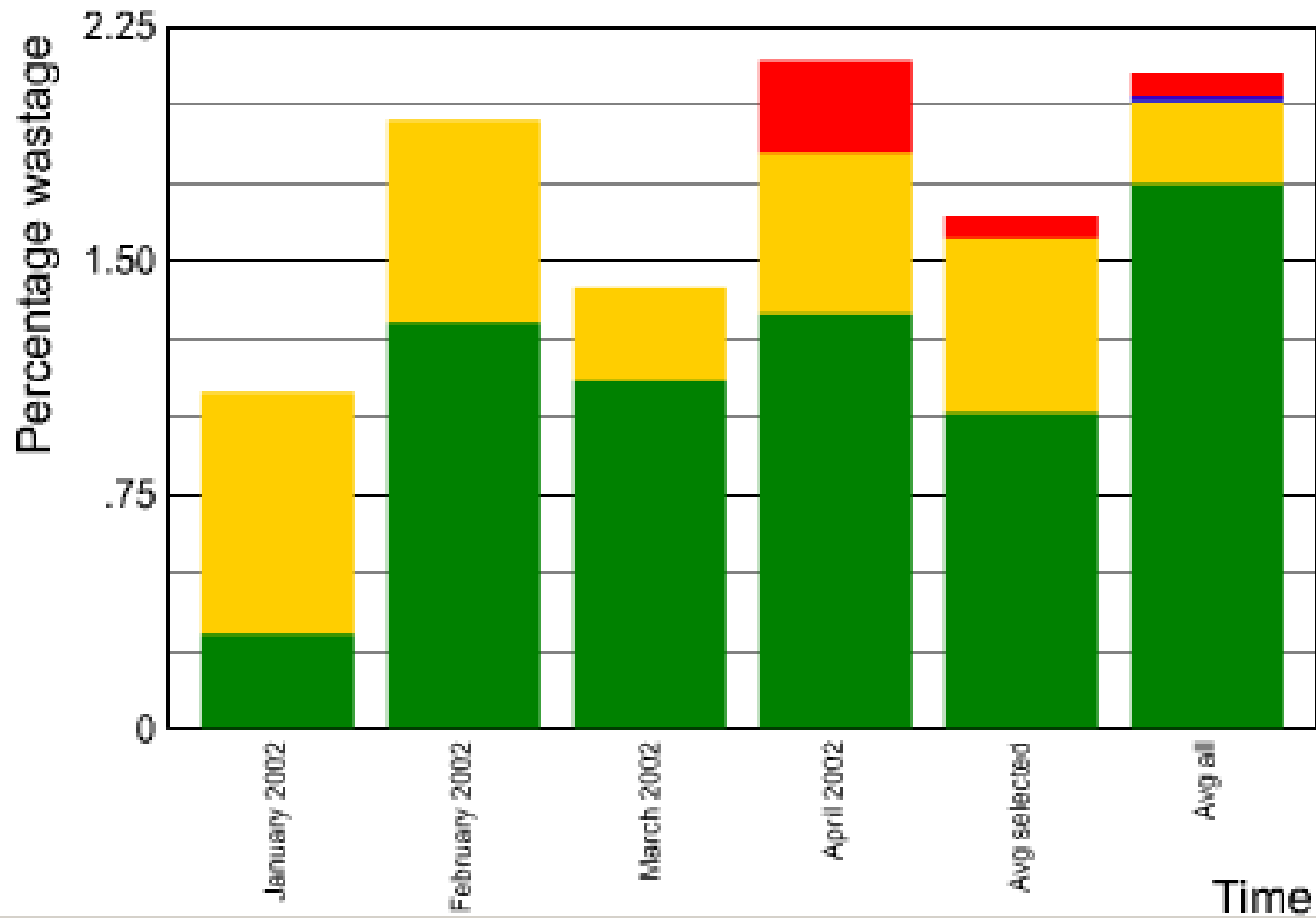
## Groups A, B and O



O P o s



## Groups A, B and O



BUTS

Blood  
Unit Tracking  
System

# Blood products which use this system

Red cells                      use system to record time out of blood bank

Platelets                      use system to record time off mixer

FFP or Cryo                  use system to record time taken from BRI  
(for immediate use)                  deliver to ward.

# UBHT Blood Unit Tracking System

All transactions with the blood  
bank must be recorded

Please login with your INITIALS and personal PASSWORD

(Use the keyboard . Press RETURN after each entry)

Initials:

Password:

# UBHT Blood Unit Tracking System

**!! Danger !!**

This unit has been out of the  
blood bank for longer than 30 mins

Inform Lab staff

Ext 2579/2529 or bleep 2667

Scan ESCAPE to end

# UBHT Blood Unit Tracking System

**!! Danger !!**

This unit has been out of the  
blood bank for longer than 6 hrs

Inform Lab staff

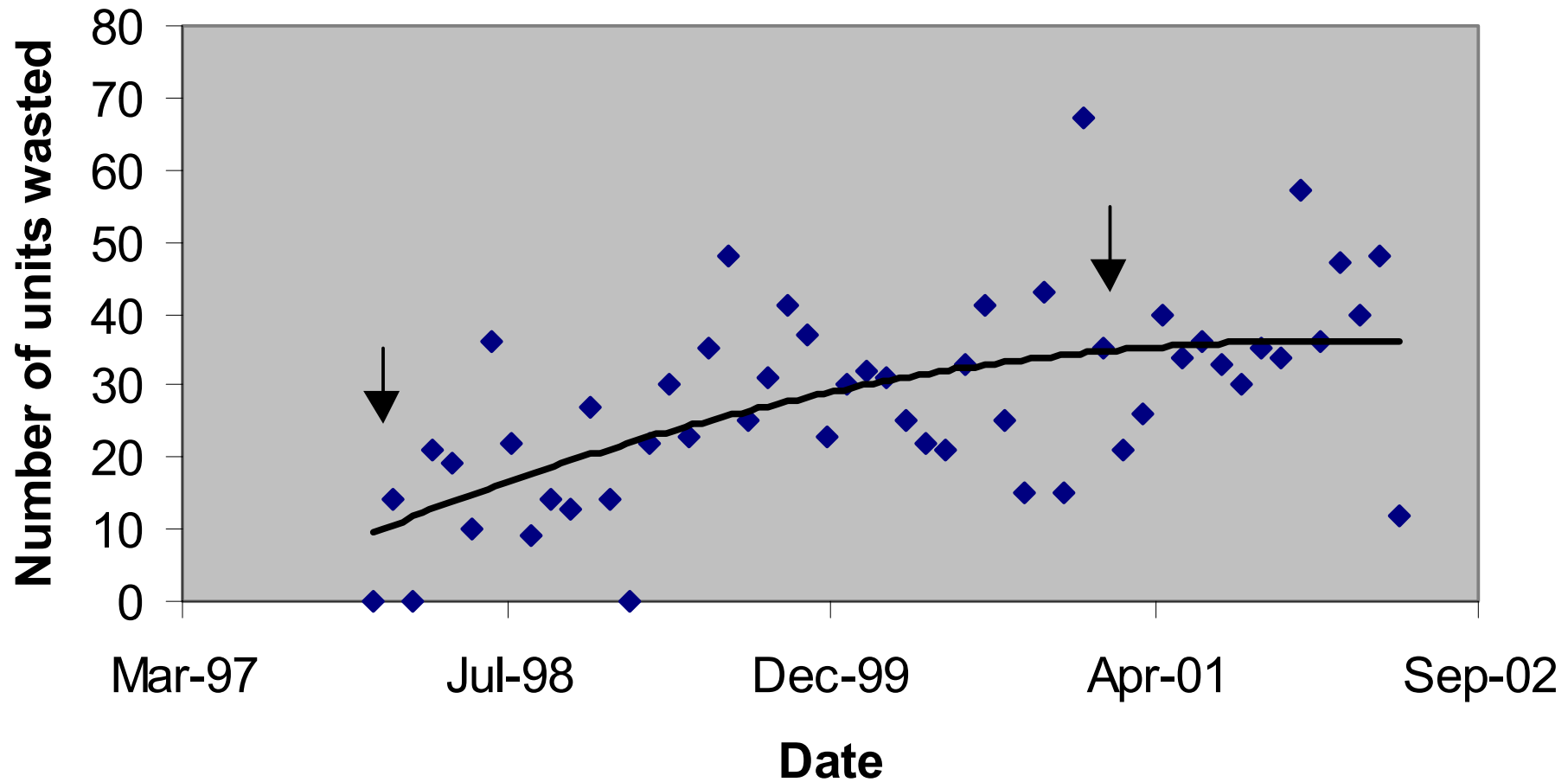
Ext 2579/2529 or bleep 2667

Scan ESCAPE to end

# Bloodhound™

- <http://www.michaelstear.pwp.blueyonder.co.uk/about.htm>

# UBHT Red cell wastage 1997-2002



# Conclusion

- Blood tracking detects units that have been out of temperature control outside the laboratory that may have previously been returned to the fridge
- This leads to increased red cell wastage
- Data on this relating to all contributors to the BSMS may strengthen this conclusion.

# Thank you

- Ian Martin
- Mike Stear
- Denis Bingham
- Peter Richardson
- Geoffrey Scott

