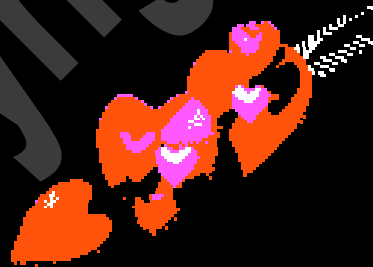


# Relationships across the supply chain

*Identify ways in which job shadowing can be facilitated and outline a proposal for how this could be implemented*



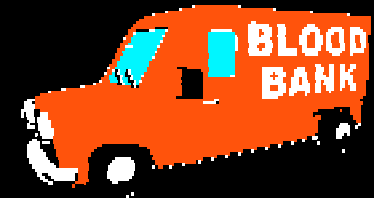
Emily Okukenu

Senior CNS Transfusion

Barts and The London NHS Trust

# Issues Department and Hospital Lab

- Time
  - Put face to name - exchange photos
  - Thorough understanding - “Wife Swap”
  - One day visit
- Resources
- Logistics



# RCI and Hospital Lab

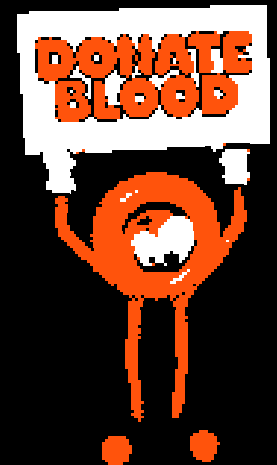
## H and I and Hospital Lab

- RCI
  - Clarification of expectations for both parties
  - Tariff
- H and I
  - Review of communications



# Donor Services and Clinical Areas

- Especially high demand clinical areas
  - particularly for donor services staff who haven't worked in a hospital



# Hospital BMS and Clinical Areas

- Appreciation of how quickly things can change
- Watch more tele!



# Main contributors

- Andy Miller
  - Deputy Scientific Technical Training Manager
- Elaine Macrate
  - Blood Bank Manager
- Grant Jukes
  - Issue Manager
- Jayne Bullock
  - Chief Biomedical Scientist
- Richard Whitmore
  - Hospital Liaison Manager

